

PINNACLE®
HIP SOLUTIONS

PINNACLE® Hip Solutions



Introduction

Primary



100 SERIES Designed to increase host bone contact with POROCOAT™ Porous Coating and GRIPTION™.



SECTOR Three screw holes for optional adjunct fixation and access to the ilium and posterior column.



300 SERIES Coated spikes are placed along the radius of the cup and designed to provide support for additional fixation.



MULTI-HOLE 8 to 12 screw holes, depending on shell size for optional adjunct fixation.



BANTAM For smaller patients or acetabular dimensions, dysplastic acetabuli (DDH), Multi-hole style only.

Revision

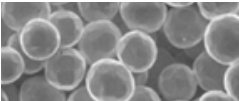


STANDARD PROFILE Revision cup with additional peripheral screw holes.

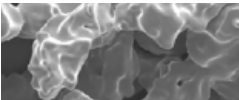


DEEP PROFILE DPX Revision cup with additional peripheral screws, 4-6 mm offset at the dome.

Cementless Fixation



POROCOAT Commercially pure titanium sintered metal beads.



GRIPTION Commercially pure titanium sintered metal particles on a POROCOAT substrate.



DUOFIX™ Combination of POROCOAT Porous Coating and highly amorphous hydroxyapatite (HA).

Liner Options



MARATHON
CROSS-LINKED POLYETHYLENE
ALTRX
ALTRA-LINK® POLYETHYLENE

Moderately cross-linked polyethylene liners.



GERAMAX™
CERAMIC ON CERAMIC ARTICULATION

Zirconia toughened alumina liners.



Primary Cups

	100			Sector			MULTIHOLE/BANTAM		300
	POROCOAT	GRIPTION	DUOFIX	POROCOAT	GRIPTION	DUOFIX	POROCOAT	GRIPTION	POROCOAT
38 mm							1217-20-038	1217-30-038	
40 mm							1217-20-040	1217-30-040	
42 mm							1217-20-042	1217-30-042	
44 mm		1217-31-044					1217-20-044	1217-30-044	
46 mm		1217-31-046					1217-20-046	1217-30-046	
48 mm	1217-01-048	1217-31-048	1217-11-048	1217-22-048	1217-32-048	1217-12-048	1217-20-048	1217-30-048	1217-03-048
50 mm	1217-01-050	1217-31-050	1217-11-050	1217-22-050	1217-32-050	1217-12-050	1217-20-050	1217-30-050	1217-03-050
52 mm	1217-01-052	1217-31-052	1217-11-052	1217-22-052	1217-32-052	1217-12-052	1217-20-052	1217-30-052	1217-03-052
54 mm	1217-01-054	1217-31-054	1217-11-054	1217-22-054	1217-32-054	1217-12-054	1217-20-054	1217-30-054	1217-03-054
56 mm	1217-01-056	1217-31-056	1217-11-056	1217-22-056	1217-32-056	1217-12-056	1217-20-056	1217-30-056	1217-03-056
58 mm	1217-01-058	1217-31-058	1217-11-058	1217-22-058	1217-32-058	1217-12-058	1217-20-058	1217-30-058	1217-03-058
60 mm	1217-01-060	1217-31-060	1217-11-060	1217-22-060	1217-32-060	1217-12-060	1217-20-060	1217-30-060	1217-03-060
62 mm	1217-01-062	1217-31-062	1217-11-062	1217-22-062	1217-32-062	1217-12-062	1217-20-062	1217-30-062	1217-03-062
64 mm	1217-01-064	1217-31-064	1217-11-064	1217-22-064	1217-32-064	1217-12-064	1217-20-064	1217-30-064	1217-03-064
66 mm	1217-01-066	1217-31-066	1217-11-066	1217-22-066	1217-32-066	1217-12-066	1217-20-066	1217-30-066	1217-03-066
68 mm							1217-20-068	1217-30-068	
70 mm							1217-20-070	1217-30-070	
72 mm							1217-20-072	1217-30-072	
74 mm									
76 mm									
Trials	2217-01-0XX (XX = Cup Size)								

Primary Cups (mm)



Revision Cups

	Revision STD	Deep Profile
	GRIPTION	GRIPTION
54 mm	1217-16-054	1217-17-054
56 mm	1217-16-056	1217-17-056
58 mm	1217-16-058	1217-17-058
60 mm	1217-16-060	1217-17-060
62 mm	1217-16-062	1217-17-062
64 mm	1217-16-064	1217-17-064
66 mm	1217-16-066	1217-17-066
68 mm	1217-16-068	1217-17-068
70 mm	1217-16-070	1217-17-070
72 mm	1217-16-072	1217-17-072
74 mm	1217-16-074	
76 mm	1217-16-076	
78 mm	1217-16-078	
80 mm	1217-16-080	
Trials	2217-06-0XX (XX = Cup Size -1)	2217-07-0XX (XX = Cup Size -1)

Revision Cups (mm)

Cups

Revision Cups Downsizing

Downsized by 6 mm: Inserts are downsized due to increased cup thickness that is required to accommodate peripheral screw. For cups up to size 72 mm inserts are downsized by 3 sizes (6 mm). e.g choosing a 60 mm cup requires a 54 mm insert.

Downsized by 4 mm: Inserts are downsized due to increased cup thickness that is required to accommodate peripheral screw. For cups of 74 mm and above inserts are downsized by 2 sizes (4 mm). e.g choosing a 74 mm cup requires a 70 mm insert.



Revision Trials			
These codes are used as trial liners with PINNACLE cups from size 68 mm to 76 mm (Primary) or 74 mm to 80 mm (Revision)			
Spacer Trials (can be modularly combined with any of the Liner Bearing Trials)		Liner Bearing Trials	
2218-00-068	Revision Liner Spacer Trial 68 mm	2218-28-000	PINNACLE Trial Liner Bearing 28 Neutral
2218-00-070	Revision Liner Spacer Trial 70 mm	2218-28-100	PINNACLE Trial Liner Bearing 28 4 10D
2218-00-072	Revision Liner Spacer Trial 72 mm	2218-28-200	PINNACLE Trial Liner Bearing 28 Lip
2218-00-074	Revision Liner Spacer Trial 74 mm	2218-28-400	PINNACLE Trial Liner Bearing 28 4 N
2218-00-076	Revision Liner Spacer Trial 76 mm	2218-32-000	PINNACLE Trial Liner Bearing 32 Neutral
		2218-32-100	PINNACLE Trial Liner Bearing 32 4 10D
		2218-32-200	PINNACLE Trial Liner Bearing 32 Lip
		2218-32-400	PINNACLE Trial Liner Bearing 32 4 N
		2218-36-000	PINNACLE Trial Liner Bearing 36 Neutral
		2218-36-100	PINNACLE Trial Liner Bearing 36 4 10D
		2218-36-400	PINNACLE Trial Liner Bearing 36 4 N



Cup Size

Primary	Revision	22.225 mm liner	28 mm liner				32 mm liner				36 mm liner			40 mm liner
		Neutral	Neutral	+4 Neutral	+4 10°	Lipped	Neutral	+4 Neutral	+4 10°	Lipped	Neutral	+4 Neutral	+4 10°	+4 Neutral
38 mm		1219-22-038												
40 mm		1219-22-040												
42 mm		1219-22-042												
44 mm		1219-22-044	1219-28-044		1219-28-144									
46 mm		1219-22-046	1219-28-046		1219-28-146									
48 mm	54 mm		1219-28-048	1219-28-448	1219-28-148	1219-28-248		1219-32-448	1219-32-148					
50 mm	56 mm		1219-28-050	1219-28-450	1219-28-150	1219-28-250		1219-32-450	1219-32-150					
52 mm	58 mm		1219-28-052	1219-28-452	1219-28-152	1219-28-252	1219-32-052	1219-32-452	1219-32-152	1219-32-252		1219-36-452	1219-36-152	
54 mm	60 mm		1219-28-054	1219-28-454	1219-28-154	1219-28-254	1219-32-054	1219-32-454	1219-32-154	1219-32-254		1219-36-454	1219-36-154	
56 mm	62 mm		1219-28-056	1219-28-456	1219-28-156	1219-28-256	1219-32-056	1219-32-456	1219-32-156	1219-32-256	1219-36-056	1219-36-456	1219-36-156	1219-40-456
58 mm	64 mm		1219-28-058	1219-28-458	1219-28-158	1219-28-258	1219-32-058	1219-32-458	1219-32-158	1219-32-258	1219-36-058	1219-36-458	1219-36-158	1219-40-458
60 mm	66 mm		1219-28-060	1219-28-460	1219-28-160	1219-28-260	1219-32-060	1219-32-460	1219-32-160	1219-32-260	1219-36-060	1219-36-460	1219-36-160	1219-40-460
62 mm	68 mm		1219-28-062	1219-28-462	1219-28-162	1219-28-262	1219-32-062	1219-32-462	1219-32-162	1219-32-262	1219-36-062	1219-36-462	1219-36-162	
64 mm	70 mm		1219-28-064	1219-28-464	1219-28-164	1219-28-264	1219-32-064	1219-32-464	1219-32-164	1219-32-264	1219-36-064	1219-36-464	1219-36-164	
66 mm	72 mm		1219-28-066	1219-28-466	1219-28-166	1219-28-266	1219-32-066	1219-32-466	1219-32-166	1219-32-266	1219-36-066	1219-36-466	1219-36-166	
68 mm			1219-28-068	1219-28-468	1219-28-168		1219-32-068	1219-32-468	1219-32-168	1219-32-268	1219-36-068	1219-36-468	1219-36-168	
70 mm	74 mm		1219-28-070	1219-28-470	1219-28-170		1219-32-070	1219-32-470	1219-32-170	1219-32-270	1219-36-070	1219-36-470	1219-36-170	
72 mm	76 mm		1219-28-072	1219-28-472	1219-28-172		1219-32-072	1219-32-472	1219-32-172	1219-32-272	1219-36-072	1219-36-472	1219-36-172	
74 mm	78 mm			1219-28-474	1219-28-174		1219-32-074	1219-32-474	1219-32-174	1219-32-274	1219-36-074	1219-36-474	1219-36-174	
76 mm	80 mm			1219-28-476	1219-28-176		1219-32-076	1219-32-476	1219-32-176	1219-32-276	1219-36-076	1219-36-476	1219-36-176	
Trials		2218-22-XXX XXX = last 3 figures of implant code	2218-28-XXX (XXX = liner size – up to 66 mm liner OD)				2218-32-XXX (XXX = liner size – up to 66 mm)				2218-36-XXX (XXX = liner size – up to 66 mm)			

Liners



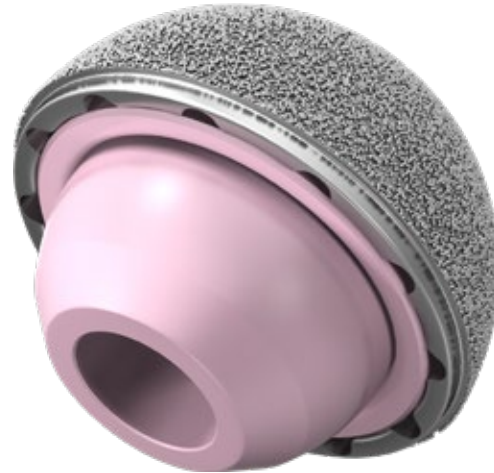
Cup Size

Primary	Revision	28 mm Inner Diameter				32 mm Inner Diameter				36 mm Inner Diameter			40 mm Inner Diameter			44 mm Inner Diameter		
		Neutral	+4 Neutral	+4 10°	Lipped	Neutral	+4 Neutral	+4 10°	Lipped	Neutral	+4 Neutral	+4 10°	Neutral	+4 Neutral	+4 10°	+4 Neutral	+4 10°	
38 mm																		
40 mm																		
42 mm																		
44 mm		1221-28-044		1221-28-144														
46 mm		1221-28-046		1221-28-146														
48 mm	54 mm	1221-28-048	1221-28-448	1221-28-148	1221-28-248	1221-32-048	1221-32-448	1221-32-148										
50 mm	56 mm	1221-28-050	1221-28-450	1221-28-150	1221-28-250	1221-32-050	1219-32-450	1221-32-150										
52 mm	58 mm	1221-28-052	1221-28-452	1221-28-152	1221-28-252	1221-32-052	1219-32-452	1221-32-152	1221-32-252	1221-36-052	1221-36-452	1221-36-152						
54 mm	60 mm	1221-28-054	1221-28-454	1221-28-154	1221-28-254	1221-32-054	1219-32-454	1221-32-154	1221-32-254	1221-36-054	1221-36-454	1221-36-154						
56 mm	62 mm	1221-28-056	1221-28-456	1221-28-156	1221-28-256	1221-32-056	1221-32-456	1221-32-156	1221-32-256	1221-36-056	1221-36-456	1221-36-156	1221-36-256	1221-40-056	1221-40-456	1221-40-156		
58 mm	64 mm	1221-28-058	1221-28-458	1221-28-158	1221-28-258	1221-32-058	1221-32-458	1221-32-158	1221-32-258	1221-36-058	1221-36-458	1221-36-158	1221-36-258	1221-40-058	1221-40-458	1221-40-158		
60 mm	66 mm	1221-28-060	1221-28-460	1221-28-160	1221-28-260	1221-32-060	1221-32-460	1221-32-160	1221-32-260	1221-36-060	1221-36-460	1221-36-160	1221-36-260	1221-40-060	1221-40-460	1221-40-160		
62 mm	68 mm	1221-28-062	1221-28-462	1221-28-162	1221-28-262	1221-32-062	1221-32-462	1221-32-01	1221-32-262	1221-36-062	1221-36-462	1221-36-162	1221-36-262	1221-40-062	1221-40-462	1221-40-162	1221-44-462	1221-44-162
64 mm	70 mm	1221-28-064	1221-28-464	1221-28-164	1221-28-264	1221-32-064	1221-32-464	1221-32-164	1221-32-264	1221-36-064	1221-36-464	1221-36-164	1221-36-264	1221-40-064	1221-40-464	1221-40-164	1221-44-464	1221-44-164
66 mm	72 mm	1221-28-066	1221-28-466	1221-28-166	1221-28-266	1221-32-066	1221-32-466	1221-32-166	1221-32-266	1221-36-066	1221-36-466	1221-36-166	1221-36-266	1221-40-066	1221-40-466	1221-40-166	1221-44-466	1221-44-166
68 mm						1221-32-068	1221-32-468	1221-32-168	1221-32-268	1221-36-068	1221-36-468	1221-36-168	1221-36-268	1221-40-068	1221-40-468	1221-40-168	1221-44-468	1221-44-168
70 mm	74 mm					1221-32-070	1221-32-470	1221-32-170	1221-32-270	1221-36-070	1221-36-470	1221-36-170	1221-36-270	1221-40-070	1221-40-470	1221-40-170		
72 mm	76 mm					1221-32-072	1221-32-472	1221-32-172	1221-32-272	1221-36-072	1221-36-472	1221-36-172	1221-36-272	1221-40-072	1221-40-472	1221-40-172		
74 mm	78 mm					1221-32-074	1221-32-474	1221-32-174	1221-32-274	1221-36-074	1221-36-474	1221-36-174	1221-36-274	1221-40-074	1221-40-474	1221-40-174		
76 mm	80 mm					1221-32-076	1221-32-476	1221-32-176	1221-32-276	1221-36-076	1221-36-476	1221-36-176	1221-36-276	1221-40-076	1221-40-476	1221-40-176		
Trials		2218-28-XXX (XXX = liner size)				2218-32-XXX (XXX = liner size)				2218-36-XXX (XXX = liner size)				2218-40-XXX (XXX = liner size)			2218-44-XXX (XXX = liner size)	



Cup Size

Cup Size		28 mm liner	32 mm liner	36 mm liner
Primary	Revision	Neutral	Neutral	Neutral
38 mm				
40 mm				
42 mm				
44 mm		1218-83-744		
46 mm		1218-83-746		
48 mm	54 mm	1218-83-748	1218-82-748	
50 mm	56 mm	1218-83-750	1218-82-750	
52 mm	58 mm	1218-83-752	1218-82-752	1218-81-752
54 mm	60 mm	1218-83-754		1218-81-754
56 mm	62 mm	1218-83-756		1218-81-756
58 mm	64 mm	1218-83-758		1218-81-758
60 mm	66 mm	1218-83-760		1218-81-760
62 mm	68 mm	1218-83-762		1218-81-762
64 mm	70 mm	1218-83-764		1218-81-764
66 mm	72 mm	1218-83-766		1218-81-766
68 mm				
70 mm	74 mm			
72 mm	76 mm			
74 mm	78 mm			
76 mm	80 mm			
Trials		2218-89-1XX (XX = liner size)	2218-82-7XX (XX = liner size)	2218-87-3XX (XX = liner size)



Liners



Enhanced Stability Constrained Liners (GVF)

Cup Size		28 mm liner		32 mm liner		36 mm liner		40 mm liner	
Primary	Revision	+4 Neutral	+4 10°	+4 Neutral	+4 10°	+4 Neutral	+4 10°	+4 Neutral	+4 10°
38 mm									
40 mm									
42 mm									
44 mm									
46 mm									
48 mm	54 mm	1218-28-648	1218-28-748						
50 mm	56 mm	1218-28-650	1218-28-750						
52 mm	58 mm			1218-32-652	1218-32-752				
54 mm	60 mm			1218-32-654	1218-32-754				
56 mm	62 mm			1218-32-656	1218-32-756	1218-36-656	1218-36-756		
58 mm	64 mm			1218-32-658	1218-32-758	1218-36-658	1218-36-758		
60 mm	66 mm			1218-32-660	1218-32-760	1218-36-660	1218-36-760		
62 mm	68 mm			1218-32-662	1218-32-762			1218-40-662	1218-40-762
64 mm	70 mm			1218-32-664	1218-32-764			1218-40-664	1218-40-764
66 mm	72 mm			1218-32-666	1218-32-766			1218-40-666	1218-40-766
68 mm				1218-32-668	1218-32-768			1218-40-668	1218-40-768
70 mm	74 mm			1218-32-670	1218-32-770				
72 mm	76 mm			1218-32-672	1218-32-772				
74 mm	78 mm			1218-32-674	1218-32-774				
76 mm	80 mm			1218-32-676	1218-32-776				
Trials		2218-28-XXX (XXX = liner size)		2218-32-XXX (XXX = liner size) <small>Available for size 52 and 54 only. Use a MARATHON® trial for the other sizes.</small>		2218-36-XXX (XXX = liner size)		2218-40-XXX (XXX = liner size)	



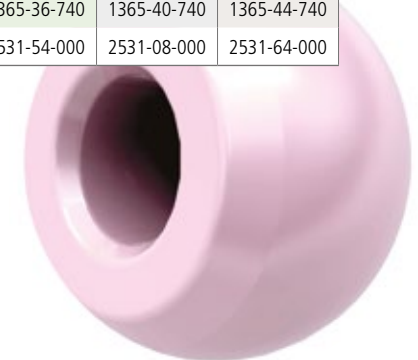


CERAMAX™ Heads

	ARTICUL/EZE® 12/14 BIOLOX® DELTA HEADS			11/13 BIOLOX DELTA HEADS		
	28 mm	32 mm	36 mm	28 mm	32 mm	36 mm
Neck Length -3						
Trial Head						
Neck Length +0				1365-28-210	1365-32-210	1365-36-210
Trial Head				87-5920	87-5928	2365-31-500
Neck Length +1		1365-32-310				
Trial Head		2530-91-000				
Neck Length +1.5	1365-28-310		1365-36-310			
Trial Head	2530-81-000		2531-51-000			
Neck Length +3				1365-28-220	1365-32-220	1365-36-220
Trial Head				87-5960	87-5962	2365-32-500
Neck Length +5	1365-28-320	1365-32-320	1365-36-320			
Trial Head	2530-82-000	2530-92-000	2531-52-000			
Neck Length +6				1365-28-230	1365-32-230	1365-36-230
Trial Head				87-5926	87-5929	2365-33-500
Neck Length +8.5	1365-28-330		1365-36-330			
Trial Head	2530-83-000		2531-53-000			
Neck Length +9		1365-32-330				1365-36-240
Trial Head		2530-93-000				2365-34-500
Neck Length +12			1365-36-340			1365-36-250
Trial Head			2531-54-000			2365-35-500

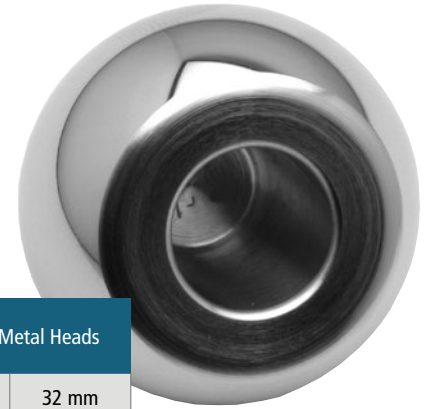
DELTA TS Heads (Titanium Sleeve - pre assembled)

	9/10 BIOLOX DELTA HEADS				ARTICUL/EZE® 12/14 DELTA TS HEADS				
	22.225 mm	28 mm	32 mm	36 mm	28 mm	32 mm	36 mm	40 mm	44 mm
	1365-22-110	1365-28-110	1365-32-110	1365-36-110					
	2522-22-001	2522-28-001	2522-32-001	9608-08-001					
	1365-22-120	1365-28-120	1365-32-120	1365-36-120					
	2522-22-002	2522-28-002	2522-32-002	9608-09-001					
						1365-32-710			
						2530-91-000			
					1365-28-710		1365-36-710	1365-40-710	1365-44-710
					2530-81-000		2531-51-000	2531-05-000	2531-61-000
		1365-28-130	1365-32-130	1365-36-130					
		2522-28-003	2522-32-003	9608-10-001					
	1365-28-720	1365-32-720	1365-36-720	1365-40-720	1365-44-720				
	2530-82-000	2530-92-000	2531-52-000	2531-06-000	2531-62-000				
	1365-28-730		1365-36-730	1365-40-730	1365-44-730				
	2530-83-000		2531-53-000	2531-07-000	2531-63-000				
		1365-32-730							
		2530-93-000							
	1365-28-740		1365-36-740	1365-40-740	1365-44-740				
	2530-84-000		2531-54-000	2531-08-000	2531-64-000				



Heads

Metal Heads



	ARTICUL/EZE™ 12/14 Metal Heads					ARTICUL/EZE 11/13 Metal Heads				ARTICUL/EZE 9/10 Metal Heads		Standard Metal Heads	
	22.225 mm	28 mm	36 mm	40 mm	44 mm	28 mm	36 mm	40 mm	44 mm	28 mm	36 mm	28 mm	32 mm
Neck Length -3													
Trial Head							1365-26-000	1365-41-500	1365-61-500	9627-00-100	9627-10-000		
Neck Length -2			1365-50-000	1365-04-000	1365-60-000								
Trial Head			2531-50-000	2531-04-000	2531-60-000					2522-28-001	9608-08-001		
Neck Length +0						1365-16-500	1365-31-000	1365-42-500	1365-62-500	9627-01-100	9627-11-000		
Trial Head						87-5920	2365-31-500	2531-42-500	2531-62-500	2522-28-002	9608-09-001		
Neck Length +1													1365-21-000
Trial Head													2530-91-000
Neck Length +1.5		1365-11-500	1365-51-000	1365-05-000	1365-61-000							1365-11-000	
Trial Head		2530-81-000	2531-51-000	2531-05-000	2531-61-000							2530-81-000	
Neck Length +3						1365-17-500	1365-32-000	1365-43-500	1365-63-500	9627-02-100	9627-12-000		
Trial Head						87-5960	2365-32-500	2531-43-500	2531-63-500	2522-28-003	9608-10-001		
Neck Length +4	1365-29-000												
Trial Head	2530-69-000												
Neck Length +5		1365-12-500	1365-52-000	1365-06-000	1365-62-000							1365-12-000	1365-22-000
Trial Head		2530-82-000	2531-52-000	2531-06-000	2531-62-000							2530-82-000	2530-92-000
Neck Length +6						1365-18-500	1365-33-000	1365-44-500	1365-64-500	9627-03-100*	9627-13-000		
Trial Head						87-5926	2365-33-500	2531-44-500	2531-64-500	2522-28-004	9608-11-001		
Neck Length +7	1365-30-000												
Trial Head	2530-70-000												
Neck Length +8.5		1365-13-500	1365-53-000	1365-07-000	1365-63-000							1365-13-000	
Trial Head		2530-83-000	2531-53-000	2531-07-000	2531-63-000							2530-83-000	
Neck Length +9							1365-34-000	1365-45-500	1365-65-500				1365-23-000
Trial Head							2365-34-500	2531-45-500	2531-65-500				2530-93-000
Neck Length +12			1365-54-000	1365-08-000	1365-64-000		1365-36-000	1365-47-500	1365-66-500			1365-14-000*	
Trial Head			2531-54-000	2531-08-000	2531-64-000		2365-36-500	2531-47-500	2531-66-500			2530-84-000	
Neck Length +13													1365-24-000*
Trial Head													2530-94-000

* Skirted heads.

Screw Offerings

Length (mm)			
	Dome 6.5 mm	Cancellous Peripheral 5.0 mm	Cortical Apex Hole
			1246-03-000
8 mm	1217-08-500		
15 mm	1217-15-500		
20 mm	1217-20-500		
25 mm	1217-25-500	1257-25-000	
30 mm	1217-30-500	1257-30-000	
35 mm	1217-35-500	1257-35-000	
40 mm	1217-40-500	1257-40-000	
45 mm	1217-45-500	1257-45-000	
50 mm	1217-50-500	1257-50-000	
55 mm	1217-55-500	1257-55-000	
60 mm	1217-60-500	1257-60-000	
65 mm	1217-65-500	1257-65-000	
70 mm	1217-70-500		

The third-party trademarks used herein are trademarks of their respective owners.

This publication is not intended for distribution in the USA.



Johnson & Johnson Medical Limited PO BOX 1988, Simpson Parkway, Livingston, West Lothian, EH54 0AB, United Kingdom.
Incorporated and registered in Scotland under company number SC132162.

DePuy Orthopaedics, Inc.
700 Orthopaedic Drive
Warsaw, IN 46582
USA
Tel: +1 (800) 366 8143
Fax: +1 (574) 669-2530

DePuy International Ltd
St Anthony's Road
Leeds LS11 8DT
England
Tel: +44 (0)113 270 0461

DePuy (Ireland)
Loughbeg
Ringaskiddy
Co. Cork
Ireland
Tel: +353 21 4914 000
Fax: +353 21 4914 199



depuysynthes.com

© DePuy Synthes Joint Reconstruction, a division of Johnson & Johnson Medical Limited. 2018. All rights reserved.

DSEM/JRC/0615/0319(2)