

Implant Bespoke Report for:

DePuy

CORAIL Collared Stem / Marathon Cup (70+)

Comprising PRIMARY hips implanted up to:	04 February 2019
NJR Database extract:	05 April 2019
Produced on:	16 April 2019
Licenced for use until:	16 April 2020

Contents

Cumulative Revision Rate comparison	2
-------------------------------------	---

This report has been produced by the National Joint Registry of England, Wales and Northern Ireland (NJR). It summarises survival associated with the CORAIL Collared Stem / Pinnacle Cup (70+) up to the specified dates. This analysis is based on data collected by the NJR for the following combinations of products:

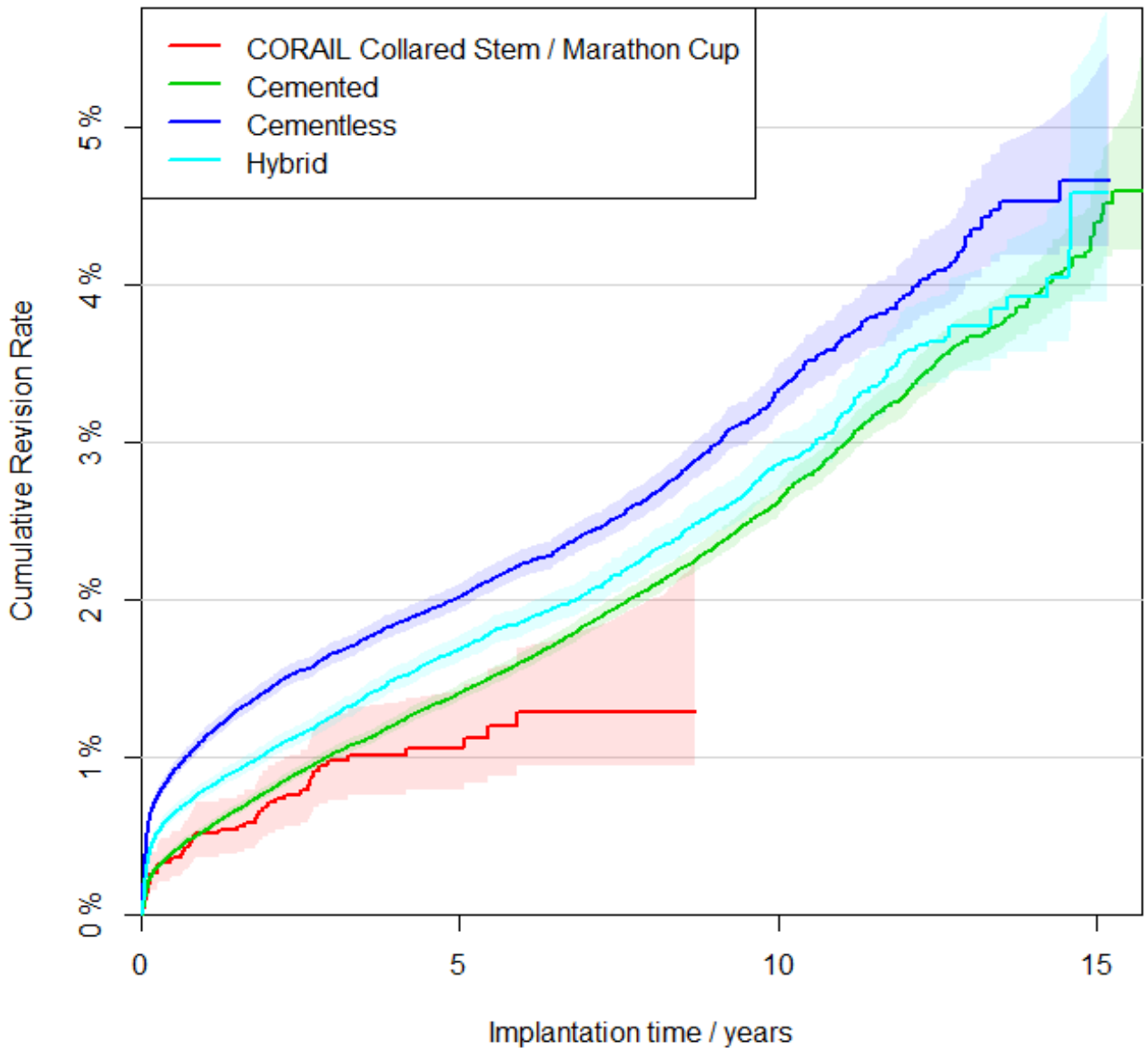
Femoral components	CORAIL Collared Stems in patients aged 70+
Acetabular Components	Marathon cemented cups
Comparator Groups	All fully cemented, cementless and hybrid hips, age 70+, excluding metal on metal

This report is subject to the National Joint Registry Supplier Feedback Terms and Conditions Use. In particular, this analysis must not be released to any third party, unless directly employed by the Supplier, without written permission of the the Healthcare Quality Improvement Partnership, with the exception of submissions to regulatory bodies

Revision and Survivorship

Cumulative Revision Rate

Primary Hip - Age over 70



Bespoke Report for:

CORAIL Collared Stem / Marathon Cup (70+)

Disclaimer

Disclaimer

The National Joint Registry (NJR) produces this report through its contractor, Northgate Public Services (UK) Limited (NPS) using data collected, collated and provided by third parties. As a result, neither NJR or NPS takes any responsibility for the accuracy, currency, reliability and correctness of any data used or referred to in this report, and disclaims all warranties in relation to such data, in each case to the maximum extent permitted by legislation.

To the maximum extent permitted by law, neither the NJR or NPS shall have any liability (including but not limited to liability by reason of negligence) for any loss, damage, cost or expense incurred or arising by reason of any person using or relying on the data within this report and whether caused by reason of any error, omission or misrepresentation in the report or otherwise. This report is not to be taken as advice. Third parties using or relying on the data in this report do so at their own risk and will be responsible for making their own assessment and should verify all relevant representations, statements and information with their own professional advisers.